

NO	QTY	PART NO	DESCRIPTION	STD SEAL KIT
1	1	21410004	BHCS, 10-32 x 3/8, ALY	
2	2	21430017	WASHER	X
3	4	21500014	SHCS, M6-1.0 X 45, ALY	
4	1	23002011	RETAINING RING, ROUND, EXT	X
5	1	23012008	RETAINING RING, ROUND, INTL	X
6	1	23521018	PIN, GROOVE, TYPE H, 3/16, 1/2 LONG	
7	1	39000036	O-RING, (-908)	X
8	1	39000037	O-RING, (-906)	X
9	1	39010042	BU RING, (-014)	X
10	1	39050037	O-RING, (-015)	X
11	2	39050092	SEAL, BALL, VLV, UNLOAD	X
12	2	55250005	O-RING, (-011)	X
13	1	85600311	PLUG, VALVE, UNLOAD, MANUAL	
14	1	85600902	HANDLE, VALVE, LONG	
15	1	85600903	HANDLE, VALVE, SHORT	
16	1	87010110	SO ADAPTER, HANDLE, VALVE	
17	1	87010190	WASHER, LIMIT, VALVE, BALL	
18	1	87010191	SPINDLE, CONTROL, VALVE, BALL	
19	1	87010192	BALL, CONTROL, DIRECTIONAL	X
20	2	87010193	SPACER, SPINDLE, STEEL, VALVE, BALL	
N/A	N/A	60470300	KIT, SEAL, VALVE, BALL, MM	NOTED

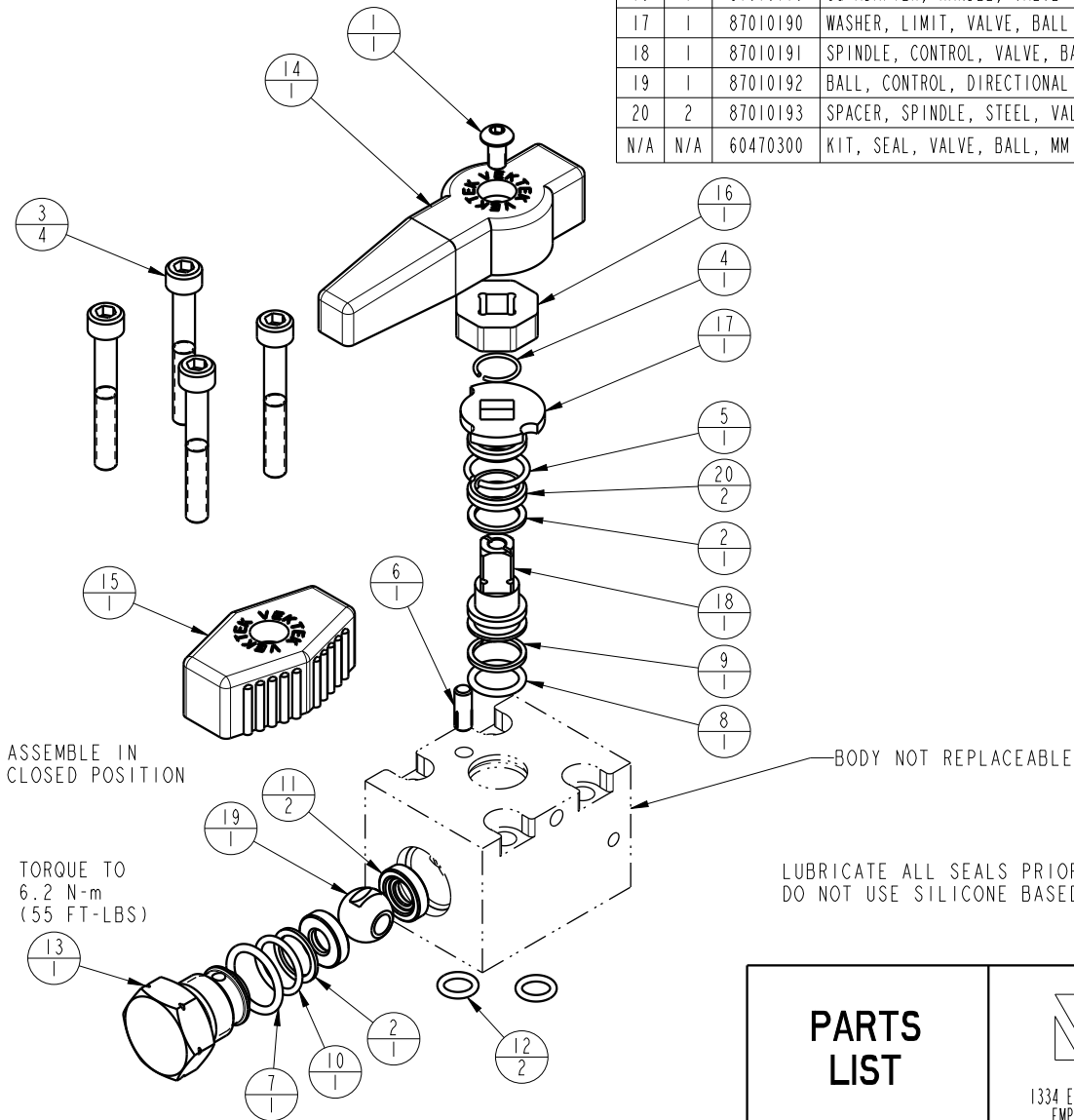
B

B

A

A

TORQUE TO  
2.8 N-m  
(25 FT-LBS)



ASSEMBLE IN  
CLOSED POSITION

TORQUE TO  
6.2 N-m  
(55 FT-LBS)

BODY NOT REPLACEABLE

LUBRICATE ALL SEALS PRIOR TO INSTALLATION  
DO NOT USE SILICONE BASED LUBRICANTS

**PARTS LIST**



VEKTEK, INC.  
1334 E. SIXTH AVE. P.O. BOX 625  
EMPORIA, KS. 66801 U.S.A.

ASSEMBLIES AFFECTED  
47030100

**PARTS LIST, ASSY, BALL VALVE, MM**

\*\*\*\*

SIZE  
A

**MPLV4709**

REV  
B

SHEET 1 OF 1

FORM FEG035\_PL\_ASIZE, REV. B

B	3257	RELEASE	DLG	6/22/17
REV	IN ACCORDANCE WITH ECN	EFFECTIVE DATE	REVISED BY	DATE
DRW BY:	KR	<b>DRAWING STATUS: Released</b>		
DATE:	05/26/17	PRODUCTION APPROVED FOR RELEASED STATUS ONLY		